



4.14.2021

PATTON TOWNSHIP

NEWSLETTER

Item 9e

Spring 2021

Phone: (814) 234-0271 • E-mail: patton@twp.patton.pa.us • Website: <http://twp.patton.pa.us>

Police

The Patton Township Police Department would like to extend our thanks to the residents of Patton Township for their assistance, commitment, and desire to have a safe community. The Police Department proudly shares this honor with you.

The Police Department Asks Residents to be Vigilant and Alert

As a reminder, please remember to secure your residence and vehicles when you are away from them.

Soliciting or Peddling in Patton Township

Individuals are not allowed to engage in soliciting or peddling in Patton Township without first applying for and receiving a permit. Every solicitor or peddler is required to carry their permit with them while engaged in soliciting or peddling in Patton Township. If you encounter an issue with an individual engaged in soliciting or peddling, feel free to contact the Patton Township Police Department.

Brush, Grass, and Weeds

Residents are reminded that they may not permit any grass, weeds, or vegetation (not eatable or planted for some useful or ornamental purpose) to grow on their properties past the height of six (6) inches. It is also unlawful for grass, weeds, or vegetation to throw off any unpleasant or obnoxious odor or to conceal any debris or to create or to produce pollen.

Prescription Take-Back Program

The Pennsylvania Prescription Drug Take-Back Program focuses on alleviating the health and safety concerns from the diversion and abuse of prescription medications by helping our communities properly dispose of unused prescription medications. Therefore, a prescription drug drop-off box has been installed in the municipal building lobby.

In 2020, Patton Township collected 150 pounds of unused prescription medications.

For more information, please visit <http://twp.patton.pa.us/departments/police/prescription-take-back-program>

Home Protection Checks Provided by Patton Township Police Department

If you will be away from your house for an extended period, you are welcome to contact the Patton Township Police Department for a residence check. If police notice any suspicious activity while you are away, officers will immediately reach out to your emergency contact(s).

4 Ways to Contact the Patton Township Police Department:

Email—police@twp.patton.pa.us

911 - Emergency

1-800-479-0050 - Non-Emergency

814-234-0271 - Township Office (M-F 8:30AM till 4:30PM)



REFUSE AND RECYCLING

- April 30 & May 1: Household Hazardous Waste Collection. Registration required; go to www.centrecountyrecycles.org
- May 10-14: Spring Bulk Waste Collection; go to crcog.net/refuse
- May 31-June 4: One-day delay for trash and recycling collection due to Memorial Day.
- July 4: No change in trash or recycling collection schedule this year
- September 6-10: One-day delay for trash and recycling collection due to Labor Day

PATTON TOWNSHIP

100 Patton Plaza
State College, PA 16803
Phone: (814) 234-0271
Fax: (814) 238-7790
E-mail: patton@twp.patton.pa.us
Website: <http://twp.patton.pa.us>

BOARD OF SUPERVISORS

Dan Treviño, Chair
Pamela Robb, Vice Chair
Betsy Whitman
Elliot Abrams
Anita Thies

ADMINISTRATION

Doug Erickson, Township Manager
Stephen Casson, Director of Public Works
Tyler Jolley, Chief of Police
Larry Pegher, Director of Finance & Administration
Ken Soder, Zoning Officer

NEWS FROM THE TAX OFFICE

Real Estate Taxes:

There is a drop box out in the foyer at the township building to drop payments off and a receipt will be mailed to you.

There are three Real Estate bills per year. County and Township bills are delivered by March 1, and the School District bills are delivered sometime after July 1. There are discount, face and penalty periods for both sets of bills. Please see bill for due dates. Owners of new homes will receive a supplemental tax bill for partial year occupancy of their home.

Taxes Paid from Escrow:

Not all lending institutions request tax bills from our Tax Office. If there is no notation on your bill, please forward your bill to your lender with a note requesting that they submit a letter in writing to the Tax Office for the next billing cycle. Supplemental bills might not be paid through escrow. Please contact your mortgage company for payment information.

Earned Income Tax Returns:

Centre Tax Agency is responsible for collecting and processing earned income tax payments and returns. The Centre Tax Agency (CTA) is operated by State College Borough and is located in the Finance Department of the State College Borough Municipal Building, 243 S Allen St, State College, PA. Forms and instructions as well as e-file are available at www.statecollegepa.us/index.aspx?nid=1446

Homestead and Farmstead Exclusion:

An exclusion may be available by submitting an application to the Centre County Board of Assessment, 420 Holmes Street, Bellefonte, PA 16823. Applications are available at the County's Assessment Office (814-355-6721) or at our website.

Property Tax/Rent Rebate Programs:

The Property Tax/Rent Rebate program benefits older Pennsylvanians, surviving spouses age 50 and older, and people with disabilities age 18 and older. Reimbursement for a portion of property taxes or rent in the previous year may be available. The deadline to apply is June 30, 2019. For information, call the PA Department of Revenue at 1-888-222-9190 or visit www.revenue.state.pa.us

How is Your Internet Service?

We Need Your Input.

Patton Township is surveying residents to evaluate the performance of internet services. All information collected by the survey will be used only for this purpose.

The survey can be found at:

<https://www.surveymonkey.com/r/PTBroadband>

May is Bike Month!



Nationally, the month of May is celebrated as Bike Month. Locally, the Centre Regional Planning Agency (CRPA) and Patton Township celebrate by encouraging people to get on their bicycles and explore their neighborhoods.

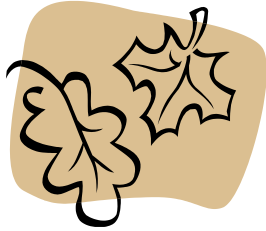
The Patton Township Recreation Advisory Committee (RAC) works on behalf of our residents on all things recreational. This includes a connected Shared Use Path system to connect neighborhoods, recreation space, and commercial areas for use by pedestrians and bicycles.

Many cycling opportunities also exist outside Patton Township. They include:

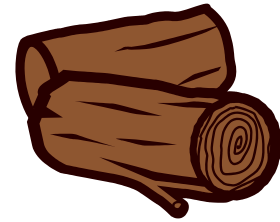
www.dcnr.pa.gov/Recreation/WhatToDo/MountainBiking
trails.dcnr.pa.gov/maptrails/
www.trailink.com

On May 18, the CRPA and the RAC will hold a virtual Bike Chat at 5:30 pm. Topics for discussion will include bicycle safety, the Patton Township Shared Use Path system and its connections between neighborhoods and parks and, also connections to adjoining municipalities.

For more information on local bike events and to register for the workshop visit www.crcog.net/bikes. "See" you then!



Patton Township 2021 Leaf & Brush Collection Schedule & Guidelines



Patton Township collects leaves and brush that are placed along the roadside throughout the year. The Township has two continuous collection efforts in the Spring and Fall when most leaves need to be collected. During the remaining months of the year the Township will collect leaves and brush in one pass through the entire Township during the first week/first Monday of each Month. The details of the leaf and brush collection efforts are indicated below. Residents who live on rural routes of the Township are required to contact the Public Works Department, (814) 234-0271, if you have leaves or brush for collection. You are located on a rural route if you live north of Gray's Woods Boulevard and beyond the intersection of Cricklewood Drive and Fox Hollow Road. The collection route begins in Park Forest and from there it goes to Woodycrest, then Toftrees, and finally to the rural routes if needed to finish. The Township collection is performed by two or three crews simultaneously. They collect large piles of brush ahead of leaves followed by smaller piles of brush that are chipped at the curbside. If the crews do not make it through the Township that day they will pick up where they left off and continue.

Spring & Fall Collection

Spring Collection: March 1 – April 23 (8 weeks)

Fall Collection: September 7 – November 26 (12 weeks)

This collection effort will be continuous (cycling through the Township over and over) as long as there are leaves and brush to collect.

Normal Monthly Collection (first week/Monday of each month)

January 4, February 1, May 3, June 7, July 6, August 2, December 6

Leaf and brush collection will be done with only **one** trip through the Township. New piles that are placed out after the Crews have been through your neighborhood will not be collected until the next monthly collection. Please be patient it typically takes two to four days to complete collection through the entire Township in one pass, depending upon amount to be collected.

Resident Guidelines

1. Leaves and/or brush shall be placed curbside prior to 7 AM. Place leaves and brush within five (5) feet of the edge of the road. Do not place leaves or brush on the roadway (§149-16 of the Code of Patton Township).
2. Pile all cut ends of brush in the same direction towards the street.
3. Leaves and brush must be in separate piles. Ornamental grass will be collected and must be separated from leaves and brush.
4. Please do not park vehicles in front of the piles. Leaves and brush cannot and will not be collected if a car is parked in front of a pile.
5. Limbs larger than 8-inches in diameter, stumps, logs, old firewood, and root balls cannot be processed by the Township's equipment and will not be collected. Please make other arrangements for the disposal of these items.
6. A maximum of four (4) truckloads of un-chipped limbs and brush will be collected from a single property. **(4 truckloads of un-chipped brush = 1 load of chipped brush)**

****If piles are not in compliance with the Township's guidelines, a door hanger will be placed indicating what was found by the road crew.**

IMPORTANT DATES

- Apr. 2** Township Offices Closed
- Apr. 5** Planning Commission Meeting - 4:30PM
- Apr. 14** Board of Supervisors Meeting - 5:00PM
- Apr. 20** Recreation Advisory Committee - 5:30PM
- Apr. 28** Board of Supervisors Meeting - 5:00PM
- May 3** Planning Commission Meeting - 4:30PM
- May 10** Planning Commission Work Session - 4:30PM
- May 12** Board of Supervisors Meeting - 5:00PM
- May 18** General Primary Election
- May 18** Recreation Advisory Committee (Parks Tour)-4:00PM
- May 26** Board of Supervisors Meeting - 5:00PM
- May 31** Township Offices Closed
- June 7** Planning Commission Meeting - 4:30PM
- June 14** Planning Commission Work Session - 4:30PM
- June 15** Recreation Advisory Committee - 5:30PM

- June 16** Board of Supervisors Meeting - 5:00PM
- July 5** Township Offices Closed
- July 12** Planning Commission Meeting - 4:30PM
- July 19** Planning Commission Work Session - 4:30PM
- July 20** Recreation Advisory Committee - 5:30PM
- July 21** Board of Supervisors Meeting - 5:00PM
- Aug. 2** Planning Commission Meeting - 4:30PM
- Aug. 9** Planning Commission Work Session - 4:30PM
- Aug. 17** Recreation Advisory Committee - 5:30PM
- Aug. 18** Board of Supervisors Meeting - 5:00PM
- Sept. 6** Township Offices Closed
- Sept. 8** Board of Supervisors Meeting - 5:00PM
- Sept. 13** Planning Commission Meeting - 4:30PM
- Sept. 20** Planning Commission Work Session - 4:30PM
- Sept. 21** Recreation Advisory Committee (Parks Tour)-4:00PM
- Sept. 22** Board of Supervisors Meeting - 5:00PM

PATTON TOWNSHIP
100 Patton Plaza
State College, PA 16803

PRSR STD
US POSTAGE
PAID
State College PA
Permit No. 21

Primary Election Day is Tuesday May 18, 2021

Information available at:

centrecountyvotes.com

814-355-6703

Elections@centrecountypa.gov

CRPA
Centre Regional
Planning Agency

WE WANT YOUR INPUT!

Take the Sustainability Survey by April 30 and be entered into our prize drawing for one of 3 amazing prizes!

Visit centresustains.com for the survey link and more information on the region's sustainability efforts.